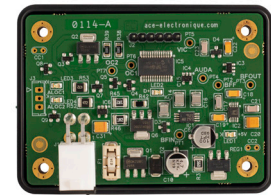


Use

- › With ACE Energy's D+ Cordless box, your installation is under control! This signal allows you to determine if the engine is running, and, in turn, activate certain equipment for which the signal is required.
- › Cordless innovation: on many modern vehicles (mainly EURO 6), this signal is sometimes impossible to be captured directly on the alternator. Our Cordless D+ box detects the start and stop of the alternator with no wired connection to it, and activates the desired equipment only when the engine is running.



Features

- › Simplifies your installation
- › Without a wired connection to the alternator
- › Compatible with EURO 6 / 6+ vehicle

Specifications

	ACE-D-PLUS-SF
Reference	10100-0129A
Dimensions	L76xP56xH23mm
Weight	60g

